

# CONOCERTE

S A Ú L M O N D R A G Ó N



**Cuaderno de Charts**

# YO CONFIO EN EL

SAUL MONDRAGON

## INTRO

1. ONLY PIANO & PERC

DM A7 DM 1. 2. G A7

2. BANDO IN

**A**

DM A7 DM Gm7 DM A7 GA7

10

**B**

DM A7 DM

24

1. ONLY PIANO & PERC

2. BANDO IN

**C**

DM A7 DM Gm7 DM A7 GA7

32

**D**

DM A7 DM

46

1. ONLY PIANO (PERC SOLO)

**E**

DM A7 DM

54

2. BANDO IN (GTR SOLO)

**D**

DM A7 DM Bb

62 (OPEN) (SOLO ULTIMA VEZ)

**D**

DM

70

# TU ME SOSTIENES

Ac. GUITAR INTRO

Chords: G, G, AM, C, G

7

Chords: EM, AM, C, G<sup>1</sup>, B, D<sup>2</sup>, C/D, G

13

Chords: D, AM, C, G, D, AM, C

D.C. AL CODA

20

Chords: C, G, D, AM, C, G, D, AM

28

BRASS SOLO

Chords: C, G, D, AM, C, G, D, AM

36

Chords: C, G, D, AM, C, G, D

42

Chords: AM, C, G, D, AM, C, G

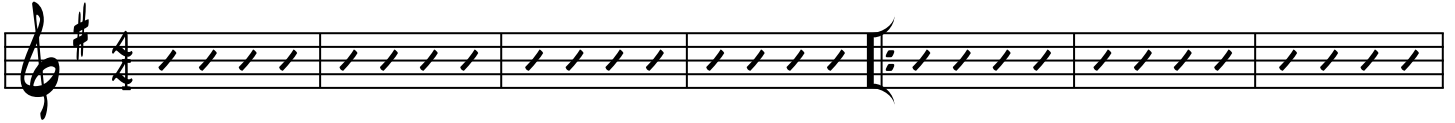
49

Chords: D, AM, C, C/D, G

# TU AMOR

SAUL MONDRAGON

G D/F# E7 Dsus4 C AM D7sus4 D7 (A) G D/F# E7 Dsus4 C G/B

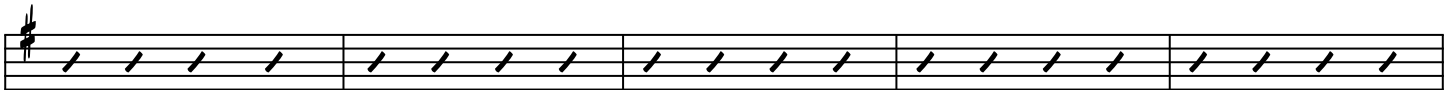


AM7 D7sus4 D7 G/B (B) C D/C Bm7 E7 AM7 D7sus4



8

G Dm7 G7 C D/C Bm7 E7 C G/B AM7 D7sus4



13

REPEAT FROM INTRO

(C) E7 E7 Bm7 C G D/F# E7 Bm7



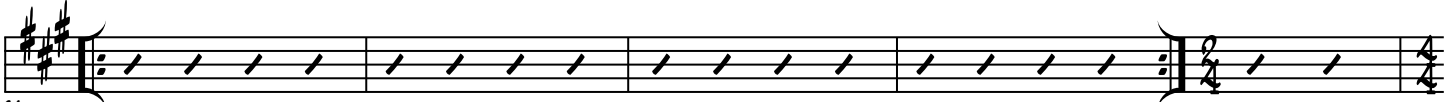
18

C G/B AM C D7sus4 E7sus4



22

(D) A E/G# F#m7 E7sus4 D A/C# Bm7 E7sus4 E7 A/C#



26

(E) D E/D C#m7 F#m7 Bm7 E7sus4 A E7 A7 D E/D C#m7 F#m7



31

D A/C# Bm7 E7sus4 F#m7 E7sus4 (FA) E/G# F#m7 E7sus4 D E7 A



37

# SANANOS

SAUL MONDRAGON

C Gm9 F Am7 G/B

**A** C Bb Dm7 C G7sus4

C G/B Am7 Fmaj7 Dm7 Em7 F Fm/G

**B** C Gm9 F Am7 G C/E F

Am7 G C/E F Am7 G **F**

FROM **A** TO CODA

**C** F Am G C/E F Am G C/E F Am G F

**D** C Gm9 F Am7 G C/E F Am7 G C/E F Am7 G

G/F F G/F F G/F F G/F F G/F F G/F F G F

# ME ENAMORE

SAUL MONDRAGON

**CHORDS:** DM9 G13 BMA7 A7(#9) A DM9

**MEASURES:** 1-6

**INSTRUMENTS:** SAX SOLO (measures 1-6), RICK ON 2 & 4 (measures 1-6), BAND IN (measures 1-6)

**CHORDS:** G13 BMA7 A7(#9) B DM9 FMA7 BbMA7 A7(#9)

**MEASURES:** 7-13

**INSTRUMENTS:** 1. (measures 7-13)

**CHORDS:** G A7(#9) C DM9 G13 BbMA7 A7(#9) BbMA7 FMA7

**MEASURES:** 14-20

**INSTRUMENTS:** 2. (measures 14-20)

**CHORDS:** C A7(#5) E DM9 FMA7 BbMA7 A7(#9)

**MEASURES:** 21-26

**INSTRUMENTS:** 1. (measures 21-26)

**CHORDS:** G A7(#9) F DM9 G13 BbMA7 A7(#9) A7(#9)

**MEASURES:** 27-32

**INSTRUMENTS:** 2. (measures 27-32), 1. (measures 31-32), 2. (measures 32-32)

**CHORDS:** G H DM9 G13 BbMA7 A7(#9)

**MEASURES:** 33-38

**INSTRUMENTS:** 1. (measures 33-38)

**CHORDS:** A7(#9) I DM9 G13 BbMA7 A7(#9) A7(#9)

**MEASURES:** 39-44

**INSTRUMENTS:** 2. (measures 39-44), 1. (measures 43-44), 2. (measures 44-44)

**CHORDS:** DM9 G13 BbMA7 A7(#9) A7(#9) DM9

**MEASURES:** 45-50

**INSTRUMENTS:** 1. (measures 45-50), 2. (measures 49-50)

**MEASURES:** 51-52

# CRISTO, TU SANGRE

SAUL MONDRAGON

C#M7 G#M7 A E C#M7 G#M7 A

PIANO & SAX ONLY

(A) E G#M7 A F#M7 B7sus4 B7 E G#M7 A2 F#M7 B7sus4 B7

5 1ST TIME PIANO ONLY

(B) E G#M7 A F#M7 B7sus4 B7

14 CHORUS REPEAT FROM (A)

(C) E G#M7 A F#M7 B7sus4 B7 B7 G#7/C C#M7 G#M7 A F#M7

18

B7sus4 B7 (D) C#M7 G#M7 A E B/D# C#M7 G#M7 A A B7sus4 B7

26 SAX SOLO

(E) E G#M7 A F#M7 B7sus4 B7 B7 G#7/C C#M7 G#M7 A F#M7

32 CHORUS

B7sus4 B7 (F) C#M7 G#M7 A E B/D# C#M7 G#M7 A E

40

# HOY, EN ADORACION

SAUL MONDRAGON

**B $\flat$ MAs7**      **A $M7$**       **G $\sharp 9(\flat 5)$**       **G $M7$**       **B $\flat$ M**      **F/A**      **B $\flat$ M**

**(A) F $MAs7$**       **E $M7$**       **A $7(\sharp 5)$**       **D $M7$**       **B $\flat$**       **B $\flat$ M**

6

**(B) F $MAs7$**       **C $M7$**       **F $7(\flat 9)$**       **B $\flat$ MAs7**      **B $\flat$ M**      **A $M7$**       **D $7(\flat 9)$**

10

**G $M7$**       **C**      **B $\flat$**       **A $M7$**       **G $M$**       **C**      **B $\flat$**       **F/A**      **G $M$**       **C**

15

**(C) F $MAs7$**       **E $M7$**       **A $7(\sharp 5)$**       **D $M7$**       **B $\flat$**       **B $\flat$ M**      **(D) F $MAs7$**       **C $M7$**       **F $7(\flat 9)$**

20

**B $\flat$ MAs7**      **B $\flat$ M**      **A $M7$**       **D $7(\flat 9)$**       **G $M7$**       **C**      **B $\flat$**       **A $M7$**       **G $M$**       **C**

26

**(E) F $MAs7$**       **E $M7$**       **A $7(\sharp 5)$**       **D $M7$**       **B $\flat$**       **B $\flat$ M**      **B $\flat$ MAs7**

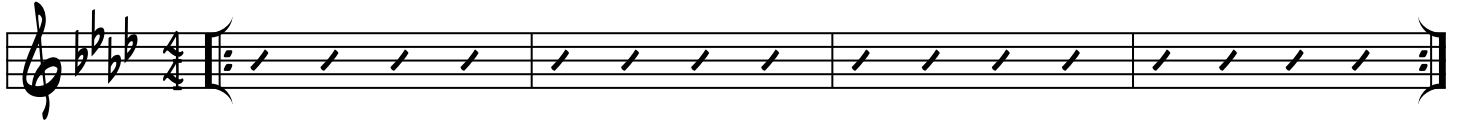
32



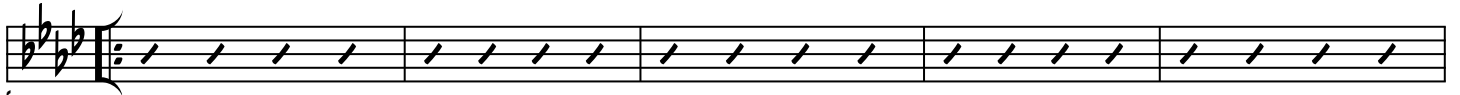
# CONOCERTE

SAUL MONDRAGON

Fm Db Ab Eb

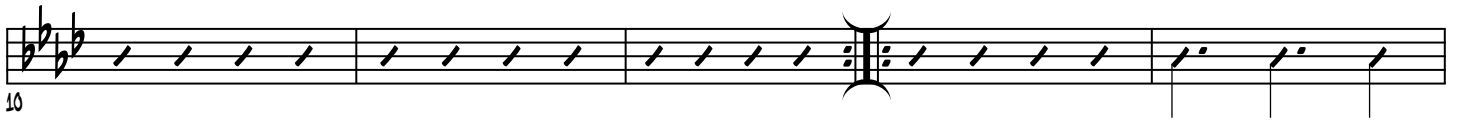


**A** Fm Eb2 DbMA7 Fm Eb2 DbMA7 Bbm7 Eb7sus4



5

AbMA7 DbMA7 Bbm7 Cm7 Db2 **B** Ab2 Eb/Ab Eb/G Ab2 Ab/C



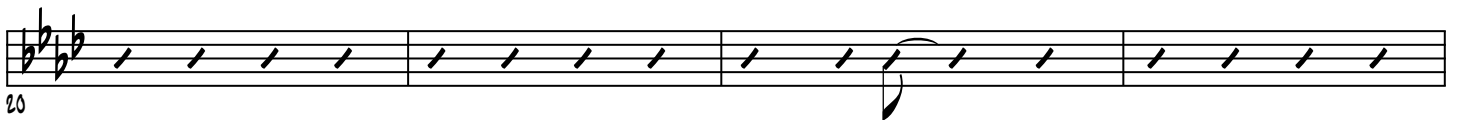
10

Db2 Fm Eb Fm Eb **C** DbMA7



15

**C** Bbm7 Db2 Fm7 Eb Db2 Ab/C Bbm7 Eb7sus4 FROM **A** TO



20

**D** Fm Db Ab Eb Fm Eb/G Ab Db Ab Eb



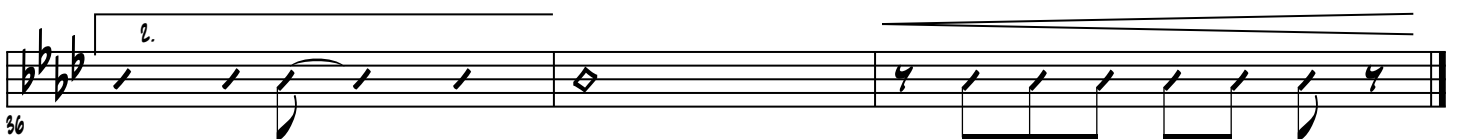
24 GTR SOLO

**E** Ab2 Eb/Ab Eb/G Ab2 Ab/C Db2 Fm Eb



32

Fm Eb DbMA7



36

# QUIERO MORIR A MI

SAUL MONDRAGON

**(A)** **(B)**

INTRO GTR ONLY SAND IN

Chords: E, C#m, E, C#m

Staff A and B show guitar introductions with slanted lines for rhythm. Staff A is labeled 'INTRO GTR ONLY' and Staff B is labeled 'SAND IN'. Both are in the key of F#m (three sharps).

**(C)**

Chords: E, C#m, A, F#m7, B

Staff C shows a guitar line with slanted lines and a final note. Chords are E, C#m, A, F#m7, B.

**(D)**

Chords: G#m7, C#7, A, F#m7, B

Staff D shows a guitar line with slanted lines and a final note. Chords are G#m7, C#7, A, F#m7, B.

**(E)**

Chords: A, E, F#m, G#m, A, E, F#m

Staff E shows a guitar line with slanted lines and notes. Chords are A, E, F#m, G#m, A, E, F#m.

**(F)**

Chords: G#m, A, G#m7, C#7, F#m7, B

Staff F shows a guitar line with slanted lines and notes. Chords are G#m, A, G#m7, C#7, F#m7, B.

REPEAT FROM **(B)**  
REPEAT **(E)** FOR GTR SOL

**(F)**

Chords: E, F#m7, B, E, C#m, E

Staff F shows a guitar line with slanted lines and notes. Chords are E, F#m7, B, E, C#m, E.

# TU LU2

SAUL MONDRAGON

8M G 8M D 8M G D 8M G D G

PIANO ONLY

END: BAND IN

8M G D G 8M G D G 8M G D

G D/F# EM7 A7sus4 D/F# G D/F#

EM7 A7sus4 A7 EM7 8M G D

EM7 D/F# G D/F# EM7 A7 G D/F#

G D/F# EM7 A7sus4 D/F#

G D/F# EM7 A7sus4 A7

8M G D 8M G Dsus4 D

PIANO ONLY

# LLENARE TU TRONO

SAUL MONDRAGON

DM9 Gm6 Bb C DM9 Gm6 Bb A7(#5)

4  
DRUMS INTRO

1. BASS ONLY

9

(A) DM7 G#MA7 Gm9 FMA7 AM7 (B) BbMA7 AM7 Gm9

BbMA7 AM7 DM7 Gm9 A7(b9) (C) DM9 EbMA7 G#MA7 Gm9

18

DM9 EbMA7 G#MA7 BbMA7 AM7 BbMA7 A7(b9) Gm7 DM EM7 FMA7 A7(#5)

26

(A) THEN (C)

(D) BbMA7 AM7 G#9(b5) Gm9 AM7 BbMA7 AM7 DM7 Gm9 A7(b9)

34

(E) DM9 EbMA7 G#MA7 Gm9 DM9 EbMA7 G#MA7 BbMA7 AM7

42

BbMA7 DM EM7 FMA7 A7(b9) (F) DM9 EbMA7 G#MA7 Gm9 DM9

50

REPEAT (E) 1. BASS ONLY

EbMA7 G#MA7 BbMA7 DM EM7 FMA7 A7(b9) BbMA7 Gm7 DM EM7 FMA7 A7(#5) DM9

57

# LOS QUE ESPERAN EN JEHOVA

SAUL MONDRAGON

F#M E A/C# D F#M E A/C# D

PIANO ONLY SAND IN

(A) F#M E A/C# D A/C# D F#M E

D2 Bm7 G2

B F# G#M E 1. 2. 3.

(B) B F# G#M E

B F# G#M E 1. 2. 3.

E C#M F#M E A/C# D

E C#M F#M E A/C# D 4. DEL 8 AL 4

(C) G#M F# B/O# E (D) C G

GUITAR SOLO

AM F F DM

AM F F DM 1. 2. 3. 4.

(E) AM G C/E F AM G C/E F

AM G C/E F AM G C/E F x3